

**UPCOMING TRAIL DAYS**

**February 18th, Saturday, at South Mountain.**  
Contact Robin Salthouse at 480-706-0172 for details.

**February 25th, Saturday, 7:00 a.m. at Dreamy Draw Recreation Area.**  
Join a scenic trail maintenance project with Ken Gometz and other PMPC members at the Dreamy Draw Recreation Area (Northern & SR-51 freeway). Ken says the weather should be perfect!

**EVENTS CALENDAR**

**February 6,** PMPC Board Meeting, Monday 7:00 P.M., at the Desert Botanical Garden - look for signs to conference room.

**Third Saturday of the Month** thru April: Coffee house & music events, North Mountain Visitor Center - 8:00 A.M. - noon.

**March 4, Saturday, SPRING IN THE MOUNTAINS - 30th Annual 'spring trek' outings event** at South Mountain Environmental Education Center. Activities from 8:00 A.M. - 1:00 P.M. For more details or to sign up see enclosed flyer or visit PMPC's web site at: [www.phoenixmountains.org](http://www.phoenixmountains.org).

**March 6,** PMPC Board Meeting, Monday 7:00 P.M.. Meetings are open to members and the Desert Botanical Garden is graciously hosting the February, March, and April meetings.

**PMPC Spring Trek Volunteers Needed**

This year marks the 30th anniversary of Spring Trek. PMPC members are planning to make this the biggest 'trek' ever but we need your help. Contact Valerie Denny today at: 602-265-5324 to sign-up to volunteer for the March 4th event.

**PLEASE - RENEW YOUR PMPC MEMBERSHIP TODAY!**

Name: \_\_\_\_\_  
 Address: \_\_\_\_\_  
 City, State: \_\_\_\_\_  
 Zip Code: \_\_\_\_\_  
 Phone(s): \_\_\_\_\_  
 e-mail address: \_\_\_\_\_

Use Enclosed  
Return  
Envelope Today!

<b>MEMBERSHIP CATEGORY</b> (please circle)		<b>AREA OF INTEREST/EXPERTISE</b> (please circle)	
<b>Family / Individual</b>	<b>\$20</b>	Communications	Membership
Organization	\$30	Speical Events	Research / Archives
<b>ADDITIONAL FINANCIAL SUPPORT</b> (please circle)		Trail Maintenance	Legislative Action
Slope Protector	\$50 - \$100		
Cliff Protector	\$100 - \$500		
Peak Protector	\$500+		

30TH ANNIVERSARY OF PMPC'S SPRING IN THE MOUNTAINS



Phoenix Mountains Preservation Council, Inc.  
P.O. Box 26121, Phoenix, AZ 85068-6121

TO:



**LOOKOUT**

Phoenix Mountains Preservation Council, Inc.  
P.O. Box 26121, Phoenix, AZ 85068-6121 [www.phoenixmountains.org](http://www.phoenixmountains.org)

**SPRING EVENT MARKS 30<sup>TH</sup> YEAR!**

Leading the plant hike, as part of the 30th Annual Spring in the Mountains, will be Wendy Hedgon (shown here last spring) of the Desert Botanical Garden.



photograph by Kent Snyder

She will be joined by members of the Sonoran Audubon Society who will provide a guided birding hike and Dr. Jim Dawson of Liberty Wildlife who's presentation will include desert hawks along with storytelling, songs, and speeches.

Plan on joining the Phoenix Mountains Preservation Council in celebrating the unique wilderness environment of Phoenix Mountain Preserves with a hike, mountain bike ride, or a leisurely horseback ride. Or, learn more about the Sonoran Desert at the South Mountain Environmental Education Center and from interpretative displays from environmental groups and wildlife organizations.

And, while you enjoy a hardy brunch, reflect for a minute on that first spring - thirty years ago when foresighted Phoenicians began introducing valley residents and city officials to the "Phoenix Mountains" near the present Dreamy Draw Recreation Area. Spring in the Mountains continues this

education and outreach tradition and builds on the work of many dedicated PMPC members spanning more than three decades.

While the predicted need to preserve the preserves continues today we can be thankful for the reality of the urban, wilderness parks envisioned by PMPC's founders in 1970 when they stated, "We the citizens of Phoenix believe that immediate steps must be taken to preserve for the future the ecology of the area...precious natural resources...[and] virgin desert mountains of a type whose scenic terrain has made Arizona known through out the World."

## VIEWSHED and ACCESS THREATENED BY CHANGED DEVELOPMENT PLAN

By Craig Weaver

Property that was originally identified for inclusion into the early Mountain Preserve system may end up being developed into both high density residential and a large-lot subdivision according to neighborhood resident Jude Nau.

Now owned by developer Grant Gist, the parcel located at 40th Street and Lincoln Drive is about 47 acres and runs on a north-south axis that abuts the Phoenix Mountains Preserve.

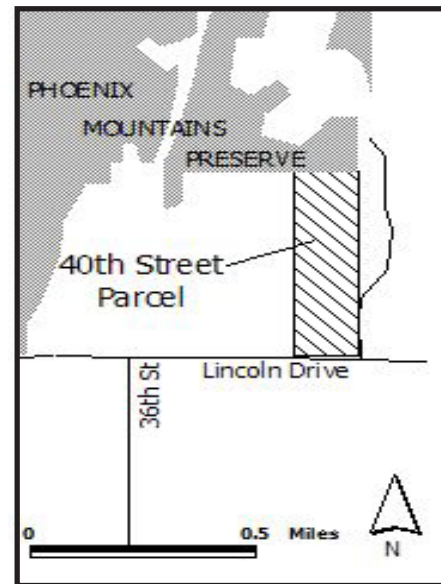
In the early 1970's, this parcel was identified for protection as Mountains Preserve land. During this period a density trade between the city and property owner allowed higher density development along the edge of Lincoln Drive in return for preservation of the back half of the parcel and the preservation of the viewscape of this rugged mountain range. The density trade was covered by a 1974 zoning stipulation.

PMPC supports the effort to reform State Trust Lands and encourage you to review the proposal and sign the petition in favor of the ballot initiative: "Conserving Arizona's Future"

To see maps and learn more details about the ballot initiative visit the Sonoran Institute at:

<http://www.sonoran.org>

Click on the "Conserving Arizona's Future" ballot initiative icon.



During intervening years, budget constraints lead to the parcel being dropped from the acquisition list and Mr. Nau feels the city may have felt that the goal of protecting the mountain slopes in this area would be achieved through the agreed upon stipulation.

However, even with this zoning in place the new developer has succeeded in getting the former Phoenix City Planning Director to state the existing zoning was "moot" because the developer was down zoning - to less residential density.

Further, since the developer desired just a large lot subdivision, the city said no public hearings on the changed development plan was needed. Since then, the developer has decided to go ahead and develop the front half of the parcel as high density residential and

develop the back half of the parcel as a large-lot, gated, subdivision. So changes in this development proposal have been made, and are significant enough, to deserve a public hearing on this new subdivision proposal.

Mr. Nau said the original development proposal would produce a development much like the nearby Antiqua residential community where steep slopes, beautiful vistas, and preserve access have been protected for the benefit of all.

**ALERT** - Contact Christopher DePerro, Site Plan Reviewer, City of Phoenix at: 602-262-1641 **before the February 9, 2006** grading hearing at City Hall. **Ask** that the grading waiver (to allow more grading) for the proposed **40th Street & Lincoln Drive** development be denied - to preserve native vegetation and avoid erosion. Questions? Contact Jude Nau at 480-994-4170.

### LOOKOUT

Phoenix Mountains Preservation Council, Inc.  
P.O. Box 26121  
Phoenix, Arizona 85068-6121

#### Executive Board:

Leslie Spencer-Snyder, *President*  
Tice Supplee, *Vice President*  
Robin Salthouse, *Treasurer*  
Jean Anderson, *Recording Secretary*  
Susanne Rothwell, *Corresponding Secretary*

The LOOKOUT is published by the Phoenix Mountains Preservation Council; Craig Weaver, Editor.

The Phoenix Mountains Preservation Council is dedicated to protecting our Phoenix Mountains Preserves.

<http://www.phoenixmountains.org>



### Current Issue of Concern

#### EDGE GUIDELINES NEED EXPANSION

By Mike Goodman

*Development guidelines and edge treatments for the new Sonoran Preserve lands provide a model of boundary interfaces and access opportunities designed to protect the new preserves. For over three years PMPC members have supported extending the guidelines to all city preserves.*

*When the mayor and city council approved the guidelines for the Sonoran Preserve three years ago they promised to expand them city wide within a year - (which they have not done). Meanwhile, the north side of South Mountain, to name only one area, is seeing one blade and grade project after another destroy the desert along the Preserve edge. Concerned citizens wonder, what is the difference between protecting the new Sonoran Preserve and protecting the other city Preserves?*

What's happening in your neighborhood? Contact PMPC via e-mail at: [info@phoenixmountains.org](mailto:info@phoenixmountains.org)

## Another Twist in South Mountain Freeway Plan

By Mike Goodman

The Citizens Committee reviewing the South Mountain Freeway proposal will likely vote in February on an alignment for the western portion. This, in theory, does not include the alignment going through South Mountain or on Pecos Road. Additionally, Arizona Department of Transportation (ADOT) will not allow the committee to discuss a 'No Build' option at this time.

It seems uncertain that the freeway's original 'need and purpose statement' will ever be reviewed. Since the committee began three years ago, new information has come into play regarding population shifts and traffic flows that was absent from the original data. It would seem logical to review all data to see if building a freeway in the study area still makes sense *before* the Citizen Committee is asked to choose a route alternative.

Two legal issues could impact the changed alignment. First, is that the Phoenix City Charter prohibits a road within a Preserve without a public vote. The second is the state law that provides similar Preserve protection with the built-in exception of the South Mountain Freeway - following the original alignment.

So the questions at this point are: Will the public have to vote on this changed alignment since it differs from alignment covered by the state law? And, how does the Gila River Indian community feel about the freeway proposal?

In the past, the community has said how important the South Mountain area is to them on a cultural basis. What they have not said is if they are willing to take the matter to court to stop the building of the freeway. Other tribes in Arizona have filed suit to prevent the destruction of cultural sites.